



PJA2 Polyclonal Antibody

Catalog No	YP-Ab-01942
Isotype	IgG
Reactivity	Human;Rat;Mouse;
Applications	WB;ELISA;IHC
Gene Name	PJA2
Protein Name	E3 ubiquitin-protein ligase Praja-2
Immunogen	The antiserum was produced against synthesized peptide derived from human PJA2. AA range:141-190
Specificity	PJA2 Polyclonal Antibody detects endogenous levels of PJA2 protein.
Formulation	Liquid in PBS containing 50% glycerol, 0.5% BSA and 0.02% sodium azide.
Source	Polyclonal, Rabbit,IgG
Purification	The antibody was affinity-purified from rabbit antiserum by affinity-chromatography using epitope-specific immunogen.
Dilution	WB 1:500-2000;IHC-p 1:50-300; ELISA 2000-20000
Concentration	1 mg/ml
Purity	≥90%
Storage Stability	-20°C/1 year
Synonyms	PJA2; KIAA0438; RNF131; E3 ubiquitin-protein ligase Praja-2; Praja2; RING finger protein 131
Observed Band	85kD
Cell Pathway	Cytoplasm . Cell membrane . Endoplasmic reticulum membrane ; Peripheral membrane protein . Golgi apparatus membrane ; Peripheral membrane protein . Cell junction, synapse . Cell junction, synapse, postsynaptic density . Localizes at the cytoplasmic side of endoplasmic reticulum and Golgi apparatus. Expressed in the postsynaptic density region of synapses (By similarity). Colocalizes with PRKAR2A and PRKAR2B in the cytoplasm and the cell membrane. .
Tissue Specificity	Brain,Embryonic kidney,Epithelium,Liver,
Function	function:Has E2-dependent E3 ubiquitin-protein ligase activity.,pathway:Protein modification; protein ubiquitination.,similarity:Contains 1 RING-type zinc finger.,subcellular location:Localizes at the cytoplasmic side of endoplasmic reticulum and Golgi apparatus. Expressed in the postsynaptic density region of synapses.,subunit:Binds ubiquitin-conjugating enzymes (E2s). In vitro, interacts with the ubiquitin-conjugating enzyme, UBE2D2.,
Background	function:Has E2-dependent E3 ubiquitin-protein ligase activity.,pathway:Protein modification; protein ubiquitination.,similarity:Contains 1 RING-type zinc finger.,subcellular location:Localizes at the cytoplasmic side of endoplasmic



reticulum and Golgi apparatus. Expressed in the postsynaptic density region of synapses.,subunit: Binds ubiquitin-conjugating enzymes (E2s). In vitro, interacts with the ubiquitin-conjugating enzyme, UBE2D2.,

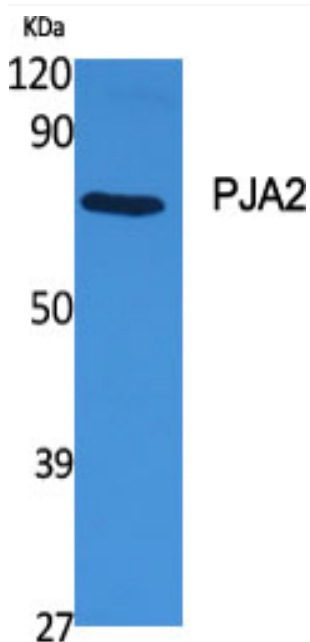
matters needing attention

Avoid repeated freezing and thawing!

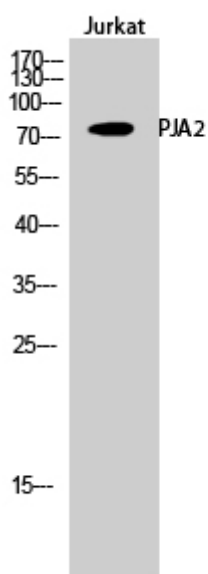
Usage suggestions

This product can be used in immunological reaction related experiments. For more information, please consult technical personnel.

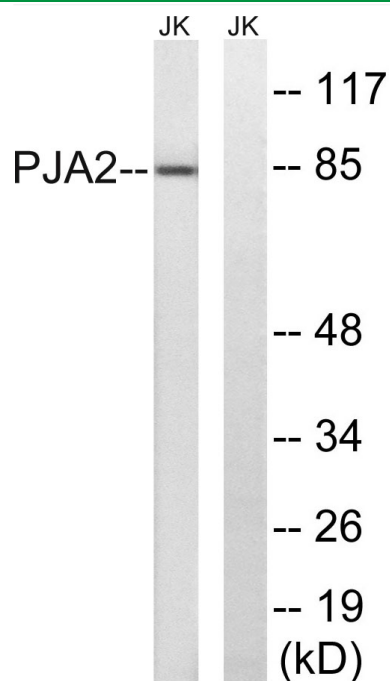
Products Images



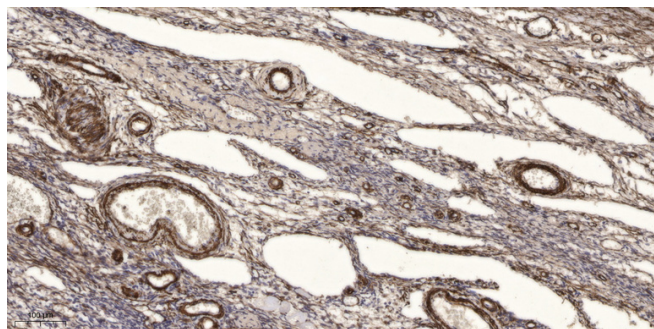
Western Blot analysis of various cells using PJA2 Polyclonal Antibody



Western Blot analysis of Jurkat cells using PJA2 Polyclonal Antibody



Western blot analysis of lysates from Jurkat cells, using PJA2 Antibody. The lane on the right is blocked with the synthesized peptide.



Immunohistochemical analysis of paraffin-embedded human oophoroma. 1, Antibody was diluted at 1:200(4° overnight). 2, Tris-EDTA,pH9.0 was used for antigen retrieval. 3,Secondary antibody was diluted at 1:200(room temperature, 45min).